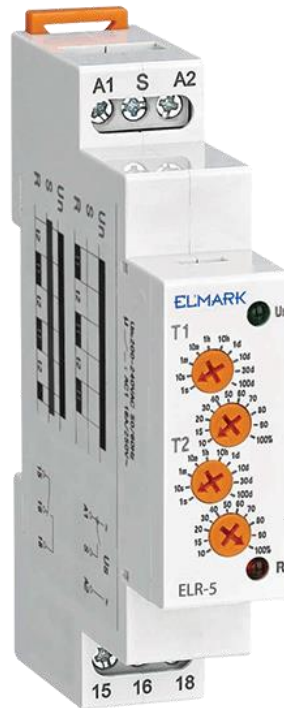


ELMARK[®]

The Brand of Electricity

ASYMMETRIC CYCLER TIMER, ELR-6

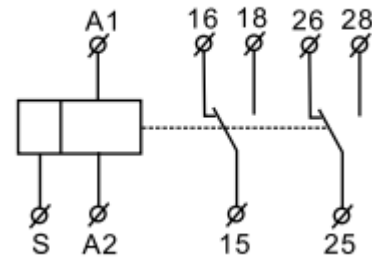


Functions:

Asymmetric cycle timer can be used for cycle delay control, providing periodic energizing, lighting control, regular room ventilation, pumps, heating control for electric circuit etc. ELR-6 is easy for operation and has range of input voltage- from 24 till 240V AC/DC. This relay have 2 time functions- Cycle beginning with pulse and cycle beginning with pause.

Technical data:

- Voltage range: 12-240V; 50/60Hz
- Output current: 2x16A (AC1)
- Function: 2C-On delay and 2C-Off delay
- Output type: 2xSPDT
- Time ranges: 0.1s-240h
- Time setting: via 2 potentiometers
- Time deviation: 10% mechanical setting
- Repeat accuracy: 0.2% set value stability
- Min. breaking capacity DC: 500mW
- Reset time: max. 200ms
- Over voltage category: III
- Output indication: red LED
- Ingress protection: IP20
- Mechanical life: 1x10⁷
- Electrical life (AC1): 1x10⁵
- Max. cable size: solid wire max. 2.5 mm² and flexible wire 1.5 mm²



TIME RANGE



Application:

- Control of industrial and home electrical appliances.
- Control of lights, heating, motors, pump, fan and etc.

Variants:

Catalogue number	Type	Dimensions (mm)			Packing/Box (pcs)
		W	H	D	
50157	ELR-5	18	90	64	1/100

